



LIFT Together *with Boys Town*SM

OVERVIEW

| | | | | | | | | | | | | | |
|-----------------------|--|--------|--------------------|------------------|-------------|--------|------------|--------------|------------|-----------------------|-----------|------------|------------|
| SITE: | Nevada | | | | | | | | | | | | |
| TOP ISSUES: | Classroom disciplinary problems Poor school climate High truancy levels Low levels of parent involvement | | | | | | | | | | | | |
| TIMEFRAME: | Academic year 2021 - 2022 | | | | | | | | | | | | |
| INVESTMENT: | <table><tr><td>Total:</td><td>\$2,868,135</td></tr><tr><td>School Partners:</td><td>\$1,520,418</td></tr><tr><td>ESSER:</td><td>\$ 399,884</td></tr><tr><td>TPOP – DJJS:</td><td>\$ 600,000</td></tr><tr><td>Grants and Contracts:</td><td>\$ 92,014</td></tr><tr><td>Boys Town:</td><td>\$ 255,820</td></tr></table> | Total: | \$2,868,135 | School Partners: | \$1,520,418 | ESSER: | \$ 399,884 | TPOP – DJJS: | \$ 600,000 | Grants and Contracts: | \$ 92,014 | Boys Town: | \$ 255,820 |
| Total: | \$2,868,135 | | | | | | | | | | | | |
| School Partners: | \$1,520,418 | | | | | | | | | | | | |
| ESSER: | \$ 399,884 | | | | | | | | | | | | |
| TPOP – DJJS: | \$ 600,000 | | | | | | | | | | | | |
| Grants and Contracts: | \$ 92,014 | | | | | | | | | | | | |
| Boys Town: | \$ 255,820 | | | | | | | | | | | | |

SYNOPSIS

Boys Town is partnering with school districts, service providers, community leaders, local governments, and funders to implement a school-centered strategy that strengthens schools and families with the purpose of increasing school success, family stability and community improvement.

The service array includes parenting education (Common Sense Parenting® – CSP), family consultations (Care Coordination Services – CCS, In-Home Family Services – IHFS), direct support at schools (School Support Specialist – SSS) and professional development for teachers and school administrators (Well-Managed Schools® – WMS, Administrative Intervention – AI, Consultation Workshop, Consultation Visits/Technical Assistance – CV/TA).



POPULATION

A total of 28 schools were served total, 9 (32%) received a full LIFT service array, 11 (39%) received School Support Specialist Services only, and 8 (29%) received Hybrid Services (a combination of School Support Services, Training, and Community-Based programs) only.

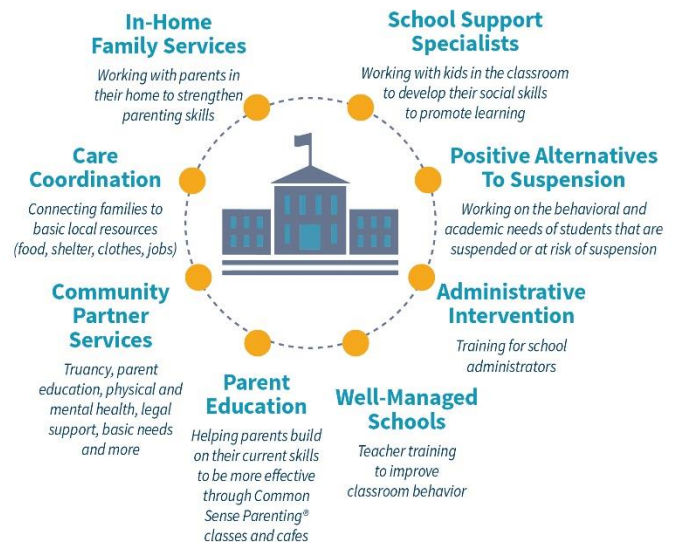
| ACADEMIC YEAR | PARTNER SCHOOLS | TARGET POPULATION |
|---------------|---|---|
| 2020-2021 | 11 Clark County School District Schools | 8 Elementary Schools 2 Middle Schools 1 High School |
| 2021-2022 | 28 Clark County School District Schools | 16 Elementary Schools 5 Middle Schools 7 High Schools |

IMPLEMENTATION

During the 2021-2022 academic year, through the collaboration with the Clark County School District, the Truancy Prevention Outreach Program (TPOP), and Acelero Program, the site experienced a 155% increase on the number of schools served from the previous academic year (2020-2021). A significant expansion was seen on the number of schools that received School Support Specialist Services (11) only. Schools have gradually adopted the components of the Boys Town model and have seen, anecdotal improvements in classroom behavioral problems and school climate in the 2021-2022 school year.

As such, LIFT Together with Boys Town Nevada was able to serve 346 families, 629 youth in our core programs and impacted 192 adults with our parenting cafes. At the same time, they were able to train 1,843 teachers and administrators on different Educational Model programs and 3,652 students through the School Support Specialist program.

HOW WE DO IT



NUMBERS SERVED

Academic year 2021 - 2022

FAMILIES, CHILDREN AND CAREGIVERS

| | CCS | IHFS | TOTAL |
|----------|-----|------|-------|
| Families | 59 | 80 | 346 |
| Children | 175 | 210 | 629 |

| CSP* Cafes | Nevada |
|--------------------|--------|
| Parents/Caregivers | 192 |

*Please note that the site did not serve families through the Common Sense Parenting program during the reporting period. For the 2022-2023 academic year it is expected to have a dedicated Parent Trainer to change that pattern and increase universal parent training footprint in the district.

TEACHERS AND SCHOOL ADMINISTRATORS

| | Nevada |
|--------------------------------------|--------|
| Well Managed Schools Training | 544* |
| Administrative Intervention Training | 5 |
| Technical Assistance | 284 |
| Other Training | 130 |

* 212 teachers received WMS Review training at Sunrise High School

STUDENTS AND FAMILIES AT SCHOOL (School Support Specialist -SSS-)

| | Nevada |
|---|-------------|
| Total number of SSS | 51* |
| Total Individual Youth | 3,652 |
| Parents by Individual Activities | |
| Parent Contact | 2,147 |
| Youth by Individual Activities | |
| Office Referral | 634 |
| One-on-One | 1,807 |
| Observations | 147 |
| Youth by Group Activities | |
| Social Skills Group | 703 |
| Classroom Mini Lesson | 283 lessons |

* Includes turnover data.

SELECTED OUTCOMES SCHOOL-WIDE

Academic year 2021 – 2022

Unfortunately, due to COVID-19 restrictions and the intermittent school closing and return during the past two academic years, outcomes at the school level have been difficult to measure in an accurate and representative way. The data collected during the 2021 – 2022 academic year is considered the new baseline that represents the post-covid normal school-wide in terms of behaviors, attendance, and overall school climate, however, having access to such data is still pending the data agreement negotiations with Clark County School District leadership. In addition to school-wide measures, for all programs implemented we are collecting routine program measures and a teacher satisfaction/school climate evaluation with several data collection points at all served schools. All this data will support the evaluation and comparison of outcomes across (at least) two school years to determine the efficiency, efficacy, and validity of all expected outcomes.

SELECTED OUTCOMES BY PROGRAM

Academic year 2021 – 2022

Care Coordination Services

CCS consultants budgeted: Four

CCS consultants employed (at any given time): 2 most of the year

Specific challenges for this program were related to turnover and the difficulty of attracting job candidates in a timely manner.

Improvement on the overall conditions of the family as a whole, individual parents, and youth from intake to case closure.

Assessment: Family Advocacy and Support Tool (FAST) helps to maximize communication about the needs and strengths of families and to support the focused development of goals, objectives and interventions. Pre/post analyses show a significant reduction in family stressors from intake to case closure.

| | NEVADA 88% had pre/post completed (42 out of 48 families) |
|---------|---|
| Family | 76% |
| Parent | 76% |
| Youth | 57% |
| Overall | 62% |

Evidently, there is a challenge in the collection of pre/post FAST, after careful evaluation, the site realized that there are some inefficiencies in the data collection, entry, reporting and utilization of FAST results.

Recommendation: Considering that on average 75% of the cases were closed at 3 – 4 months of services, the Care Coordination Specialist program developed in Nebraska, could be piloted in the site to match services with the needs of the community and the reality of the community they serve.

In-Home Family Services

IHFS consultants budgeted: Five

CCS consultants employed (at any given time): 3.5 - 4

Specific challenges for this program were related to turnover and FMLA requirements. There are also challenges related to Summer referrals, however, a strategy has been set in place to build a solid waiting-list at the end of the school year, that could be admitted during the summer months.

Reduction in family stressors and positive family functioning outcomes from intake to case closure

Assessment: Strengths and Stressors (S&S) identifies critical conditions and needs that might have led to the family and child to

services as well as the strengths a family can rely on to help solve their problems.

| | NEVADA 88% had pre/post completed (57 out of 65 families) |
|-----------------------|---|
| Environment | 34% |
| Parental Capabilities | 45% |
| Family Interaction | 49% |
| Family Safety | 1% |
| Child Well-Being | 56% |
| Social Support | 41% |
| Overall | 38% |

Again, there is a challenge in the collection of pre/post S&S, after careful evaluation, the site realized that there are some inefficiencies in the data collection, entry, reporting and utilization of S&S results.

UNDERSTANDING NEW CONTRACT WITH CLARK COUNTY SCHOOL DISTRICT CONTRACT (2022-2023 AND 2023-2024 ACADEMIC YEARS):

On August 25, 2022, the Clark County School District approved a memorandum of agreement with Boys Town for the provision of programs and services to address the social, emotional, and behavioral needs of students through LIFT Together with Boys Town. The overall scope of the agreement is as follows:

Year 1 (2022-2023)

- 13 schools implementing the LIFT Together services (all services)
- 24 schools implementing the Community Based programs (In-Home Family Services, Care Coordination Services, and Parent Education).

Year 2 (2023 – 2024)

- 13 schools from year 1 to continue implementing the LIFT Together services (all services)
- 24 schools from year 1 to convert to implementing the LIFT Together services (all services)
- 20 new schools implementing the Community Based programs (In-Home Family Services, Care Coordination Services, and Parent Education).

Site leadership is already engaging in strategy conversations with school principals and district leadership. Such strategy is focused on implementation of programs during the next academic years as well as sustainability of the programs and services for the 2024-2025 academic year and thereafter.